

**PROFISHIENCY®**

# P4-13

**BAIT CAST REEL**



## FEATURES

Lightweight, Small Profile  
Strong Graphite Frame & Side Covers  
Light Weight Aluminum Spool  
Zero Play Anti-Reverse  
Right-Hand & Left-Hand Retrieves

MODEL	P413641	P413731
WEIGHT	6.7 oz	6.7 oz
GEAR RATIO	6.4:1	7:3:1
MAX DRAG	11lbs	11lbs
BEARINGS	10+1 SS Bearings	10+1 SS Bearings
MONO	12lb/140yds	12lb/140yds
BRAID	20lb/220yds	20lb/220yds

## REEL WARRANTY

**ANYTHING POSSIBLE BRANDS** will repair or replace without charge any **ProFISHiency** reel which is defective in workmanship or materials, within one year from the date of purchase by the consumer. This warranty gives the consumer specific legal rights which may vary from state to state. The warranty extends only to the original (consumer) owner.

**Reel Warranty** covers all, but the following:

1. Lost parts.
2. Malfunctions, or damage due to abuse, misuse or accident.
3. Normal wear.
4. Malfunctions caused by inadequate repair or alterations not performed by **ANYTHING POSSIBLE BRANDS**.
5. Reel cleaning or re-lubrication required due to owner's failure to provide necessary maintenance.
6. Abuse or misuse of product.

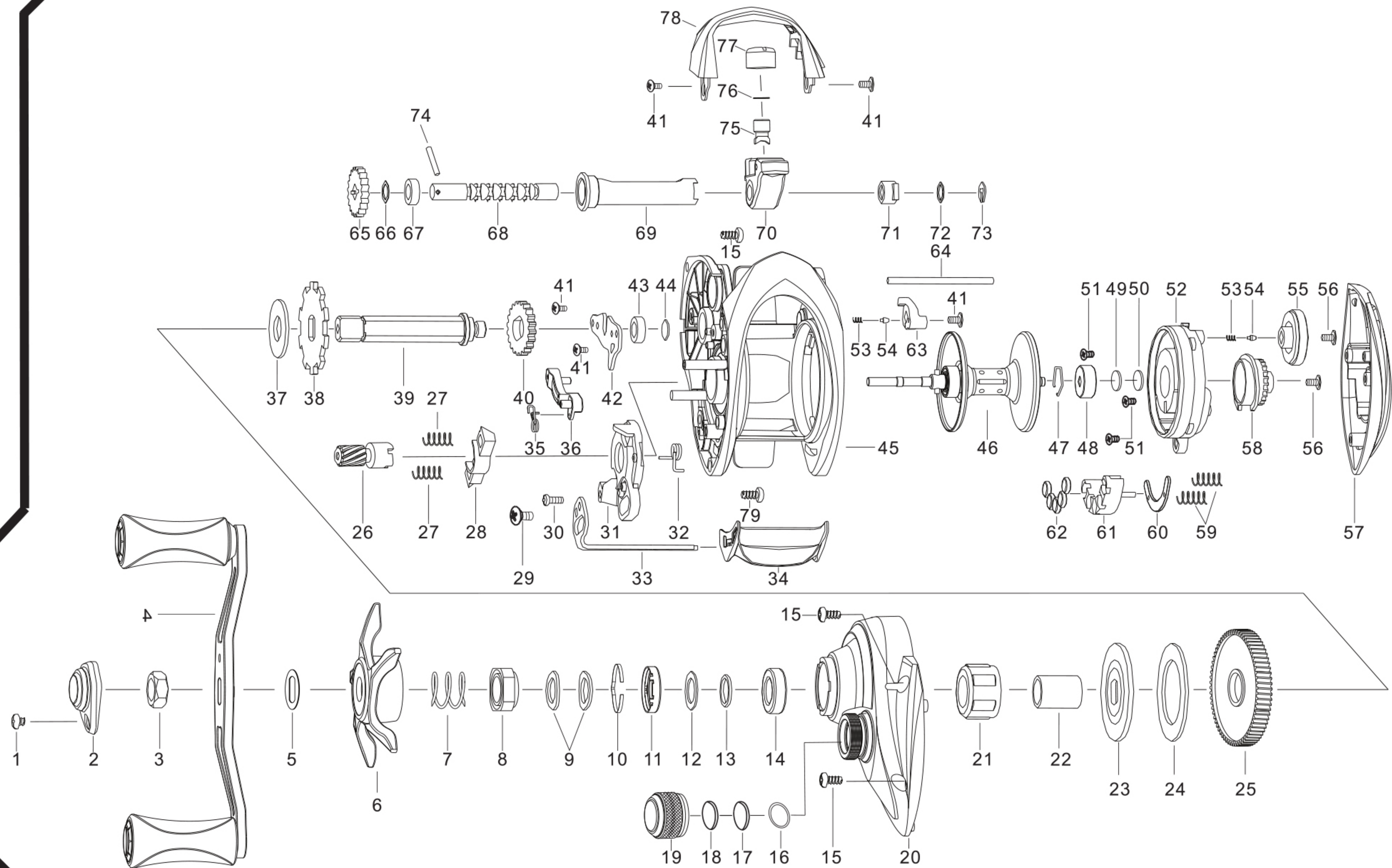
## Consumer STEP-BY-STEP Guidelines:

1. When requesting warranty claim, consumer must return/exchange at the **original place of purchase**.
2. If purchased directly from **ProFISHiency**, please email us at **customerservice@anything-possible.com** or fill out a warranty claim form on **www.ProFISHiency.com**.
3. For warranty claims, the purchase receipt must be included. Warranty claims which do not include a purchase receipt will be determined by one of **ANYTHING POSSIBLE BRANDS**'s Technical Managers on an individual basis after inspection.

## MAINTENANCE & CARE

While applying lubricant to your **P4-13 baitcast reel**, avoid using multi-purpose oil. Use lightweight silicone-based oils or greases made for fishing reels. Apply oil to all bearings, the crank shaft, and the worm gear. Apply grease to the bushings, pinion gears, drive gears, and crank gears. You will need to lubricate your reel periodically to keep the reel working smoothly. If fishing in saltwater or brackish water, it is vital to gently rinse your **P4-13 baitcast reel** with fresh water.

## Expansion diagram



**PROFISHIENCY®**

**P4-13**  
**BAITCAST REEL**

**EXPLODED VIEW**  
**Left-Handed**

No.	PARTS NAME	No.	PARTS NAME	No.	PARTS NAME	No.	PARTS NAME	No.	PARTS NAME
1	HANDLE NUT COVER SCREW	17	FRICTION WASHER	33	THUMB BAR LEVER	49	LEFT SPOOL FRICTION WASHER	65	LEVELWIND GEAR
2	HANDLE NUT COVER	18	RUBBER CONTROL WASHER	34	THUMB BAR	50	SPOOL SPACER WASHER	66	LEVELWIND GEAR WASHER
3	HANDLE NUT	19	CAST CONTROL KNOB	35	KICK LEVER SPRING	51	HOLDER SCREW	67	RIGHT LEVELWIND BEARING
4	HANDLE ASSY	20	RIGHT SIDE COVER	36	KICK LEVER	52	HOLDER	68	LEVELWIND
5	HANDLE WASHER	21	ONE WAY CLUTCH	37	LEFT DRAG WASHER	53	MAG CLICK SPRING	69	LEVELWIND COVER
6	STAR WHEEL	22	ONE WAY CLUTCH INNER SLEEVE	38	RATCHET GEAR	54	MAG CLICK PIN	70	LEVELWIND CARRIER
7	DRAG SPRING	23	DRAG PLATE	39	MAIN SHAFT	55	MAG DIAL	71	CARRIER BUSHING
8	STAR WHEEL INSERT	24	RIGHT DRAG WASHER	40	LEVEL WIND GEAR	56	MAG SCREW	72	CARRIER WASHER
9	SPRING WASHER	25	MAIN GEAR	41	MAIN SHAFT PLATE SCREW/FRONT COVER SCREW	57	LEFT SIDE COVER	73	E-RING
10	STAR WHEEL CLICK SPRING	26	PINION GEAR	42	MAIN SHAFT PLATE	58	MAG ADJUSTMENT CAM	74	LEVELWIND PIN
11	STAR WHEEL CLICK SPRING HOLDER	27	CLUTCH SPRING	43	MAIN SHAFT BEARING	59	MAGNET HOLDER SPRING	75	LEVELWIND PAWL
12	STAR WHEEL SPACING WASHER	28	CLUTCH BAR	44	MAIN SHAFT CONTROL WASHER	60	MAGNET FIXED PLATE	76	PAWL WASHER
13	STAR WHEEL ADJUSTING WASHER	29	THUMB BAR SCREW	45	BODY	61	MAGNET HOLDER	77	PAWL CAP
14	HANDLE BALL BEARING	30	CLUTCH PLATE SCREW	46	SPOOL ASSY	62	MAGNETS	78	FRONT COVER
15	RIGHT SIDE COVER SCREW	31	CLUTCH CAM	47	LOCK RING	63	LEFT SIDE PLATE SWITCH	79	BODY SCREW
16	O-RING	32	THUMB BAR SPRING	48	LEFT SPOOL BALL BEARING	64	LEVELWIND GUIDE SHAFT		

Note: please note that the inside of the expanded drawing or may not match the product due to adjustment or other reasons.