

PROFISHIENCY®

KRAZY
BAIT CAST REEL



FEATURES

- Graphite Frame & Side Plates
- Premium Dual Cork Grips
- Carbon Fiber Drag System
- Zero Play Anti-Reverse
- Aluminum Main Gear & Crank Shaft
- Hard Brass Pinion Gear
- External Adjustable Magnetic Brakes
- Machined Aluminum Spool
- Aluminum Star Drag & Spool Tension Knob
- Right-Hand & Left-Hand Retrieves

MODEL	KRZY661	KRZY731
WEIGHT	7.0 oz	7.0 oz
GEAR RATIO	6.6:1	7:3:1
MAX DRAG	20lbs	20lbs
BEARINGS	9+1 SS Bearings	9+1 SS Bearings
MONO	12lb/135yds	12lb/135yds
BRAID	14lb/120yds	14lb/120yds

REEL WARRANTY

ANYTHING POSSIBLE BRANDS will repair or replace without charge any **ProFISHiency** reel which is defective in workmanship or materials, within one year from the date of purchase by the consumer. This warranty gives the consumer specific legal rights which may vary from state to state. The warranty extends only to the original (consumer) owner.

Reel Warranty covers all, but the following:

1. Lost parts.
2. Malfunctions, or damage due to abuse, misuse or accident.
3. Normal wear.
4. Malfunctions caused by inadequate repair or alterations not performed by **ANYTHING POSSIBLE BRANDS**.
5. Reel cleaning or re-lubrication required due to owner's failure to provide necessary maintenance.
6. Abuse or misuse of product.

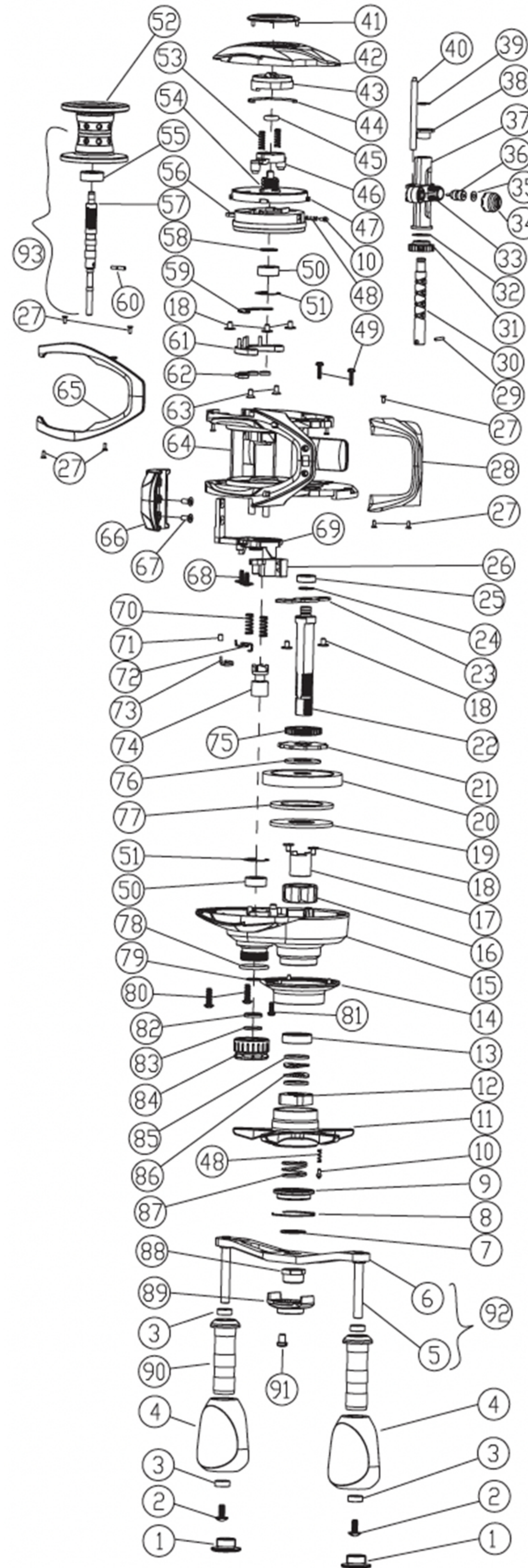
Consumer STEP-BY-STEP Guidelines:

1. When requesting warranty claim, consumer must return/exchange at the **original place of purchase**.
2. If purchased directly from **ProFISHiency**, please email us at **customerservice@anything-possible.com** or fill out a warranty claim form on **www.ProFISHiency.com**.
3. For warranty claims, the purchase receipt must be included. Warranty claims which do not include a purchase receipt will be determined by one of **ANYTHING POSSIBLE BRANDS**'s Technical Managers on an individual basis after inspection.

MAINTENANCE & CARE

While applying lubricant to your **KRAZY baitcast reel**, avoid using multi-purpose oil. Use lightweight silicone-based oils or greases made for fishing reels. Apply oil to all bearings, the crank shaft, and the worm gear. Apply grease to the bushings, pinion gears, drive gears, and crank gears. You will need to lubricate your reel periodically to keep the reel working smoothly. If fishing in saltwater or brackish water, it is vital to gently rinse your **KRAZY spinning reel** with fresh water.

PROFISHIENCY®
KRAZY
BAITCAST REEL
EXPLODED VIEW



PARTS LIST OF KRAZY BAITCAST REEL

ITEM	P/N	DESCRIPTION	REMARK	ITEM	P/N	DESCRIPTION	REMARK
1	512042-001	Handle Cap		48	626002-001	Click Spring	
2	905134-003	Screw		49	905330-001	Screw	
3	906003-001	Handle Bearing		50	906031-013	Bearing(Spool Shaft)	
4	509124-001	Handle Knob		51	709033-001	Clip Ring	
5	510188-005	Handle Rivet		52	400770-001	Spool	
6	500259-001	Handle		53	310089-001	Click Spring	
7	903388-001	Handle Washer		54	711003-001	Magnet Control Dial	
8	709036-001	Clip Ring		55	906045-013	Bearing	
9	607073-001	Click Base		56	124024-001	Spool Cover	
10	625008-101	Click Shaft		57	415035-001	Spool Shaft	
11	502014-001	Star Drag		58	903392-001	Tension Wsher	
12	504069-002	Star Drag Bushing		59	631003-001	Magnet Plate	
13	906012-002	Crank Shaft Bearing		60	415027-001	Spool Shaft Pin	
14	201098-001	Gear Box Cover		61	419034-001	Magnet Holder	
15	200265-001	Gear Side Cover		62	334002-001	Magnet	
16	110024-001	One Way Clutch		63	905321-001	Screw	
17	114015-001	Sleeve		64	100273-001	Frame	
18	905323-001	Screw		65	101138-001	Thumb Rest	
19	923062-001	Drag Washser		66	814073-001	Spool release button	
20	700149-011	Drive Gear	CB8-R56	67	905116-001	Screw	
	700149-007		CB8-R66	68	905057-001	Screw	
	700149-008		CB8-R73	69	815016-001	Release Slider	
21	705200-001	Trip Ratchet		70	310088-001	Yoke Spring	
22	704040-002	Crank Shaft		71	401012-001	Collar	
23	105075-001	Retainer		72	813047-001	Kick Lever Spring	
24	900003-001	E Ring		73	813048-001	Release Slider Spring	
25	906040-002	Bearing		74	702210-002	Pinion Gear	CB8-R56
26	815017-001	Kick Lever	702210-003		CB8-R66		
27	905315-001	Screw	702210-004		CB8-R73		
28	101139-001	Hood		75	705203-001	O/S Drive Gear	
29	814049-001	Worm Shaft Pin		76	903391-001	Washer	
30	727057-001	Worm Shaft		77	903387-004	Drag Disc	
31	705204-001	O/S Pinion Gear		78	628032-101	"O" Ring	
32	903417-001	Washer		79	903386-002	Washer	
33	722029-001	Line Guide Carrier		80	905063-101	Screw	
34	722027-001	Line Guide Carrier Nut		81	905331-001	Screw	
35	903201-002	Washer		82	903432-001	Washer	
36	715014-002	Line Guide Pawl		83	903431-001	Washer	
37	724009-001	Worm Shaft Guide		84	600224-001	Tension Knob	
38	704036-001	Worm Shaft Bush		85	903058-012	Washer	
39	900001-001	E Clip		86	903389-001	Spring Washer	
40	727046-001	Stabilizer Bar		87	310092-001	Star Drag Spring	
41	617086-001	Centrifugal Dial Ring		88	123011-001	Handle Arm Nut	
42	200266-001	Palm Side Cover		89	903420-001	Handle Nut Cap	
43	600220-001	Centrifugal Dial		90	520058-001	Insert Knob	
44	407057-001	Click Spring		91	905014-001	Screw	
45	628174-001	Dial Friction Ring		92	B08184-302	Handle Rivert Assy	
46	711002-001	Magnet Control Base		93	B06184-302	Spool Assy	
47	404027-001	Release button					