



BLAX

SPINNING REEL



FEATURES

- Zero Play Anti-Reverse
- Graphite Body & Rotor
- Double Anodized Aluminum Spool
- Thick Bail
- Rubber Grip Knob

MODEL	BLAX-2k
WEIGHT	8.4 oz
GEAR RATIO	6.2:1
MAX DRAG	13lbs
BEARINGS	10+1 SS Bearings
MONO	10lb/120yds
BRAID	15lb/165yds

REEL WARRANTY

ANYTHING POSSIBLE BRANDS will repair or replace without charge any **ProFISHiency** reel which is defective in workmanship or materials, within one year from the date of purchase by the consumer. This warranty gives the consumer specific legal rights which may vary from state to state. The warranty extends only to the original (consumer) owner.

Reel Warranty covers all, but the following:

1. Lost parts.
2. Malfunctions, or damage due to abuse, misuse or accident.
3. Normal wear.
4. Malfunctions caused by inadequate repair or alterations not performed by **ANYTHING POSSIBLE BRANDS**.
5. Reel cleaning or re-lubrication required due to owner's failure to provide necessary maintenance.
6. Abuse or misuse of product.

Consumer STEP-BY-STEP Guidelines:

1. When requesting warranty claim, consumer must return/exchange at the **original place of purchase**.
2. If purchased directly from **ProFISHiency**, please email us at **customerservice@anything-possible.com** or fill out a warranty claim form on **www.ProFISHiency.com**.
3. For warranty claims, the purchase receipt must be included. Warranty claims which do not include a purchase receipt will be determined by one of **ANYTHING POSSIBLE BRANDS**'s Technical Managers on an individual basis after inspection.

MAINTENANCE & CARE

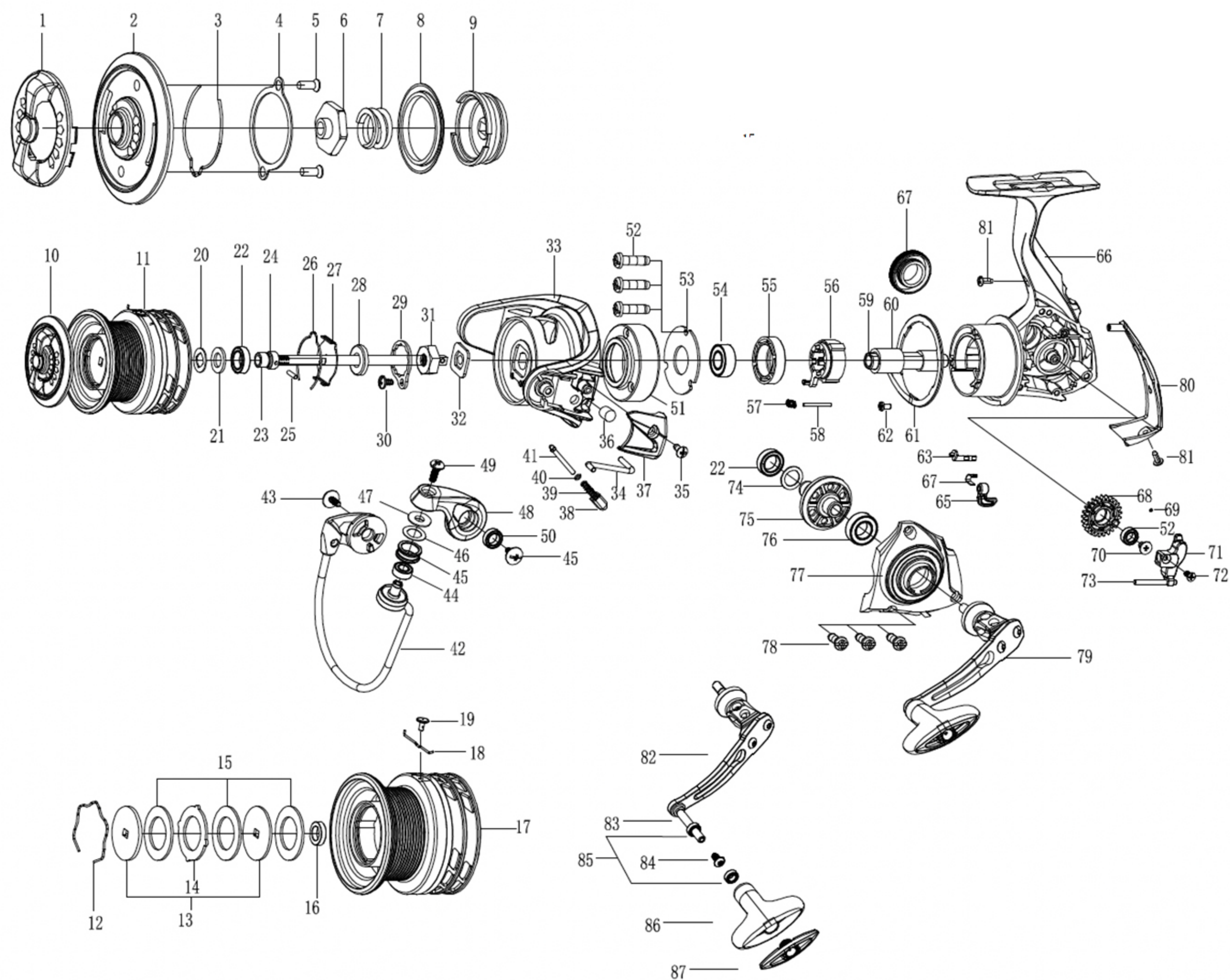
While applying lubricant to your **BLAX-2k spinning reel**, avoid using multi-purpose oil. Use lightweight silicone-based oils or greases made for fishing reels. Apply oil to all bearings, the crank shaft, and the worm gear. Apply grease to the bushings, pinion gears, drive gears, and crank gears. You will need to lubricate your reel periodically to keep the reel working smoothly. If fishing in saltwater or brackish water, it is vital to gently rinse your **BLAX-2k spinning reel** with fresh water.



BLAX

SPINNING REEL

EXPLODED VIEW



PARTS LIST OF BLAX SPINNING REEL

1	drag knob trim	31	rotor nut	61	skew block
2	drag knob	32	rotor washer	62	Screw
3	Tick ring	33	rotor	63	Reaction rod
4	cover	34	Bail trip lever	64	Reaction spring
5	screw	35	screw	65	switch
6	Sliding nut	36	balance block	66	body
7	spring	37	bail arm side cover	67	handle screw
8	Sealing ring	38	bail trip shaft	68	oscillating gear
9	drag knob cover	39	bail wire spring	69	O ring
10	drag knob assy	40	washer	70	Screw
11	spool assy	41	bail trip bar	71	oscillating slider
12	Hexagonal clasp(spool)	42	bail wire assy	72	Screw
13	Flat hole washer	43	screw	73	Oscillating slider retainer
14	Eared washer	44	ball bearing	74	drive gear washer
15	rear drag washer	45	Line roller	75	drive gear
16	washer	46	washer	76	ball bearing
17	spool	47	bushing	77	main cover
18	spring	48	bail arm	78	Screw
19	Copper nail	49	screw	79	Handle assy
20	spool click ring	50	ball bearing	80	Back cover
21	washer	51	Head aluminum sleeve	81	Screw
22	ball bearing	52	screw	82	handle
23	main shaft	53	cover	83	knob rivet
24	copper sleeve	54	ball bearing	84	Screw
25	main shaft pin	55	ball bearing bushing	85	knob
26	tick ring	56	one way ball bearing assy	86	cover
27	tick ring base	57	one way spring		
28	seal ring	58	one way spring fix pin		
29	slider retainer screw	59	pinion gear		
30	screw	60	inner ring		