



# A12 SPINNING REEL



## FEATURES

Designed for Freshwater  
 Premium Magnesium Frame  
 Carbon Composite Rotor  
 Carbon Fiber Drag System  
 Zero Play Anti-Reverse  
 Machined Aluminum Spool  
 Carbon Fiber Handle Arm  
 Machined Aluminum One-Piece Bail  
 Aluminum Pinion Gear & Main Shaft  
 Premium Cork Grip

MODEL	A12-2k (BG, CS, SG)	A12-3k (BG, CS, SG)
WEIGHT	7.2 oz	7.9 oz
GEAR RATIO	6.2:1	6.2:1
MAX DRAG	16lbs	19lbs
BEARINGS	10+1 SS Bearings	10+1 SS Bearings
MONO	6lb/160yds	10lb/150yds
BRAID	10lb/165yds	20lb/165yds

## REEL WARRANTY

**ANYTHING POSSIBLE BRANDS** will repair or replace without charge any **ProFISHiency** reel which is defective in workmanship or materials, within one year from the date of purchase by the consumer. This warranty gives the consumer specific legal rights which may vary from state to state. The warranty extends only to the original (consumer) owner.

**Reel Warranty** covers all, but the following:

1. Lost parts.
2. Malfunctions, or damage due to abuse, misuse or accident.
3. Normal wear.
4. Malfunctions caused by inadequate repair or alterations not performed by **ANYTHING POSSIBLE BRANDS**.
5. Reel cleaning or re-lubrication required due to owner's failure to provide necessary maintenance.
6. Abuse or misuse of product.

## Consumer STEP-BY-STEP Guidelines:

1. When requesting warranty claim, consumer must return/exchange at the **original place of purchase**.
2. If purchased directly from **ProFISHiency**, please email us at **customerservice@anything-possible.com** or fill out a warranty claim form on **www.ProFISHiency.com**.
3. For warranty claims, the purchase receipt must be included. Warranty claims which do not include a purchase receipt will be determined by one of **ANYTHING POSSIBLE BRANDS**'s Technical Managers on an individual basis after inspection.

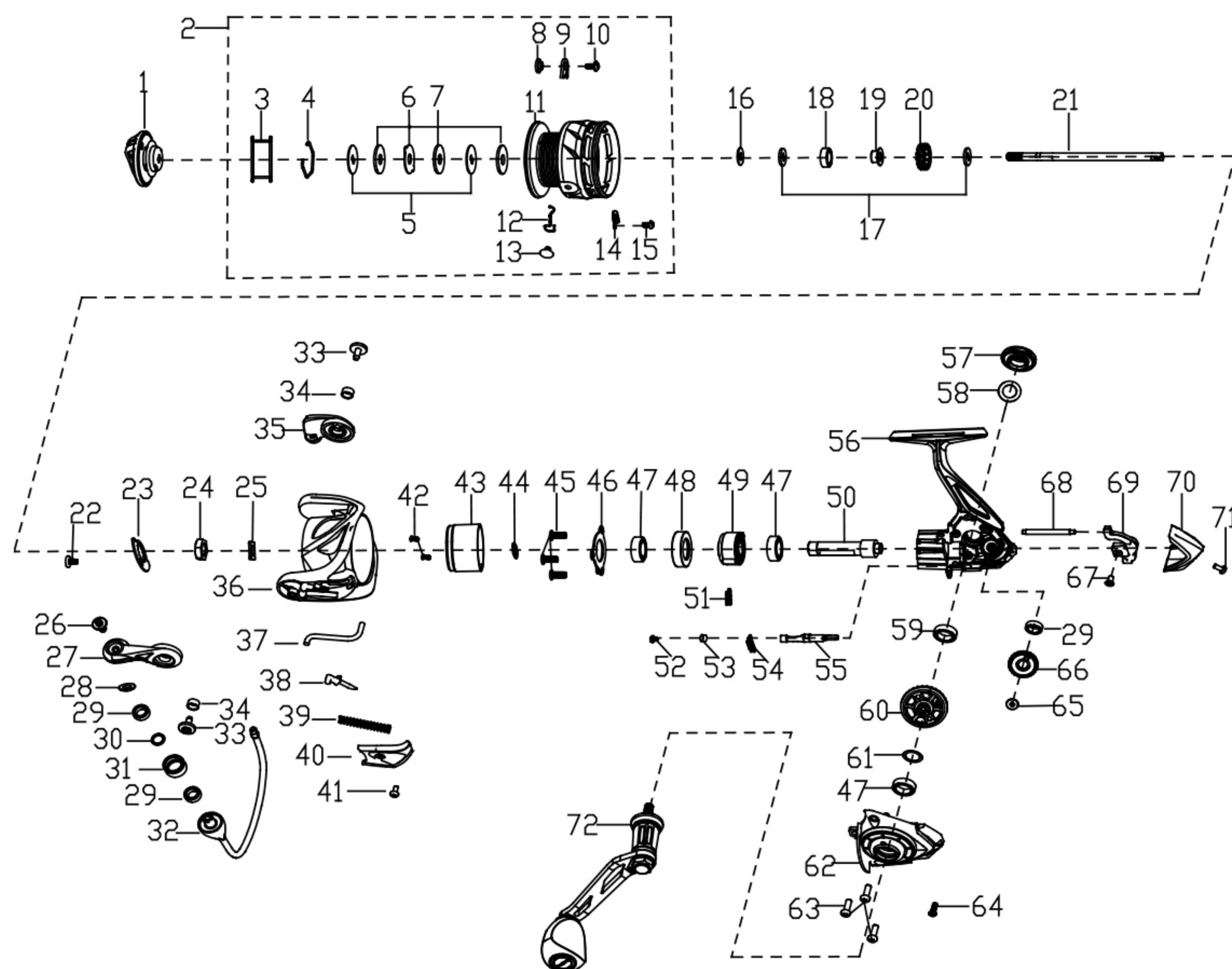
## MAINTENANCE & CARE

While applying lubricant to your **A12 spinning reel**, avoid using multi-purpose oil. Use lightweight silicone-based oils or greases made for fishing reels. Apply oil to all bearings, the crank shaft, and the worm gear. Apply grease to the bushings, pinion gears, drive gears, and crank gears. You will need to lubricate your reel periodically to keep the reel working smoothly. If fishing in saltwater or brackish water, it is vital to gently rinse your **A12 spinning reel** with fresh water.



# A12 SPINNING REEL

## EXPLODED VIEW



### PARTS LIST OF A12 SPINNING REEL

ITEM#	PARTS NUMBER	PARTS DESCRIPTION	ITEM#	PARTS NUMBER	PARTS DESCRIPTION
1	B10166-501	Drag Knob Assy	37	305211-001	Trip Bar
2	B06166-501	Spool Assy	38	303011-101	Pivot Arm
3	628167-001	Spool Rubber	39	310078-001	Spring
4	405002-001	Washer Retaining Clip	40	304234-001D25	Bail Arm Cover
5	612002-004	Keyed Washer(2req.)	41	905119-101D62	Screw
6	611002-002	Ear Washer	42	905139-003	Screw(2req.)
7	903179-101	Carbon Washer(3req.)	43	131013-101PU106	Body Head Cover
8	409013-001	Spool Clicker Spacer Ring	44	903140-001	Rotor Washer
9	406032-001	Spool Click Plate	45	905135-003	Screw(3req.)
10	905254-003	Screw	46	105039-001	Ball Bearing Retainer
11	400719-001	Spool	47	906012-005	Bearing(3req.)
12	407086-001	Spring	48	109033-202	Bearing Holder
13	402029-002G59	Line Clip	49	110004-001	Clutch Assy
14	407018-001	Spring	50	702184-002	Pinion
15	905231-103	Screw	51	107030-001	Clutch Spring
16	903324-001-002	Spool Adjust Washer	52	905087-003	Screw
17	903241-001	Main Shaft Washer(2req.)	53	703005-001	POM Bushing
18	906036-002	Bearing	54	801029-001	Clutch Switch Spring
19	712001-001	Spool Holder	55	800077-001PU106	Clutch Switch
20	719041-001	Click Gear	56	B01166-501	Body Assy
21	718279-004	Main Shaft	57	513068-001	Dust Cap
22	905097-001	Screw	58	628172-002	Dust Cap Seal
23	319005-201	Rotor Set Plate	59	906044-011	Bearing
24	318002-002	Rotor Nut	60	700118-001	Driver Gear
25	903328-001	Washer	61	903058-002	Washer
26	905120-003D62	Line Roller Screw	62	B02166-501	Body Cover Assy
27	301079-001PU106	Bail Arm	63	905117-003D62	Screw(3req.)
28	317066-001	Line Roller Collar	64	905109-001	Screw
29	906006-002	Bearing(3req.)	65	905210-003	Screw
30	903125-001	Line Roller Washer	66	B24166-301	Oscillation Gear Assy
31	315065-001D25	Line Roller	67	905127-003	Screw
32	313336-001G59	One Piece Bail	68	726061-001	Oscillation Guide
33	905294-001D62	Bail Arm Screw(2req.)	69	708138-001	Oscillation Slider
34	317030-001	Bushing(2req.)	70	103373-001D25	Body Rear Cover
35	307096-001PU106	Bail Holder	71	905246-001	Screw
36	300238-001PU106	Rotor	72	B08166-501	Handle Assy